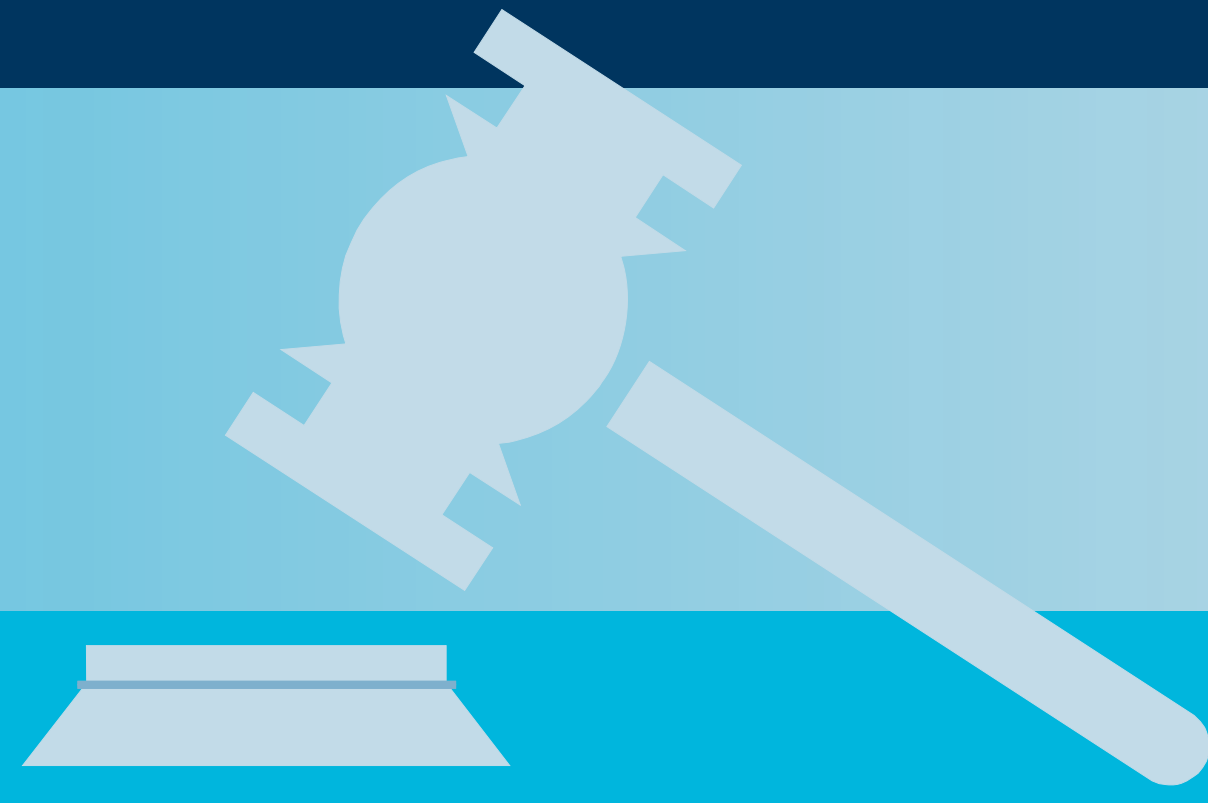


Selected Laserfiche Clients

Courts



Municipal Courts

Arlington Municipal Court, Arlington, TX
Bastrop Municipal Court, Bastrop, TX
City of Abilene Court, Abilene, TX
City of Hutto Court, Hutto, TX
City of Piedmont Court, Piedmont, OK
City of Yukon Court, Yukon, OK
Colton Town Court, Colton, NY
Eugene Municipal Court, Eugene, OR
Lake Country Municipal Court, Oconomowoc, WI
Pantego Municipal Court, Pantego, TX
Town of Niagara Justice Court, Niagara Falls, NY

Probate Courts

Berlin Probate Court, New Britain, CT
Court of Probate, Bridgeport, CT
Court of Probate, New London, CT
Court of Probate, Norwalk, CT
Court of Probate, Plainville, CT
Court of Probate, Hartford, CT
Hamden Probate Court, Hamden, CT
New Haven County Court of Probate, New Haven, CT
New Haven Regional Children's Probate Court, New Haven, CT
Probate Court Administration, West Hartford, CT
Probate Court of Waterbury, Waterbury, CT
Stamford Probate Court, Stamford, CT

County Courts

Anderson County Circuit Court Clerk, Clinton, TN
Blount County Courthouse, Maryville, TN
Canyon County Courts, Caldwell, ID
Carter County Chancery Court, Elizabethton, TN
Clackamas County Courts, Oregon City, OR
Clinton County Courts, Saint Johns, MI
Collier County Clerk of Court, Naples, FL
Collin County Court at Law Clerk, McKinney, TX
Columbia County Courts, Saint Helens, OR
County of York Judicial Center, York, PA
Franklin County Circuit Court Clerk, Winchester, TN
Greene County Circuit Court Clerk, Greeneville, TN
Josephine County Courts, Grants Pass, OR
LaSalle Parish Clerk of Court, Jena, LA
Monroe County Clerk of Court, Key West, FL
Polk County Courts, Dallas, OR
St. Helena Parish Clerk of Court, Greensburg, LA
San Bernardino County Courts, San Bernardino, CA
Tulsa County Court Clerk, Tulsa, OK
Umatilla County Courts, Pendleton, OR
Unicoi County Courts, Erwin, TN
Washington County Circuit Court Clerk, Johnson City, TN
Yamhill County Courts, McMinnville, OR
Yellowstone County Courts, Billings, MT

District and Superior Courts

16th Judicial District Court, New Iberia, LA
33rd District Court, Trenton, MI
9th Judicial District, Alexandria, LA
Brown County District Court, Hiawatha, KS
Butte County Superior Court, Oroville, CA
Contra Costa Superior Courts, Martinez, CA
County of Ventura Superior Court, Ventura, CA
Doniphan County District Court, Troy, KS
Iowa 5th Judicial District, Des Moines, IA
Marion Superior Court, Indianapolis, IN
Modoc County Superior Court, Alturas, CA
Multnomah Oregon Judicial Dept., 4th District, Portland, OR
Nevada County Superior Court, Nevada City, CA
Placer County Superior Courts, Auburn, CA
Prairie Grove District Court, Prairie Grove, AR
Riverside County Superior Court, Riverside, CA
San Bernardino County Courts, San Bernardino, CA
San Mateo County Superior Court, Redwood City, CA
Sumner County District Court, Wellington, KS
Superior Court of California, Kern County, Bakersfield, CA
Superior Court of California, San Luis Obispo County, San Luis Obispo, CA
Virginia Beach District Court, Virginia Beach, VA

Circuit Courts

Anderson County Circuit Court Clerk, Clinton, TN
Chesterfield County Circuit Court, Chesterfield, VA
Douglas County Circuit Court, Roseburg, OR
Franklin County Circuit Court Clerk, Winchester, TN
Jackson County Circuit Court, Medford, OR
Lane County Circuit Court, Eugene, OR
Linn County Circuit Court, Albany, OR
Washington County Circuit Court Clerk, Johnson City, TN

State, Federal and Other

Arkansas Supreme Court, Little Rock, AR
Florida 13th Judicial District, Tampa, FL
Georgia Administrative Office of the Courts, Atlanta, GA
Iowa 5th Judicial District, Des Moines, IA
Judicial Department 4th District, Multnomah, OR
Kansas Judicial Branch, Topeka, KS
Oregon Judicial Department, Salem, OR
Oregon Judicial Department, Klamath Falls, OR
US Bankruptcy Court, Fargo, ND

Appellate Courts

First Circuit Court of Appeals, Baton Rouge, LA
Fourteenth Court of Appeals, Houston, TX
Third Circuit Court of Appeals, Lake Charles, LA
Washington State Court of Appeals, Division II, Tacoma, WA